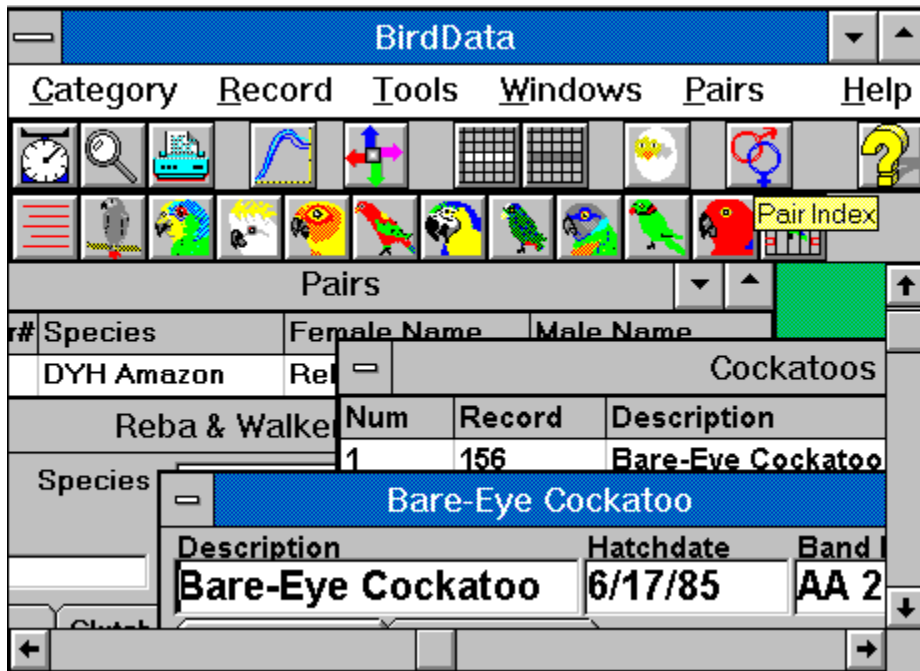


BirdData Overview



To obtain information about an icon or menus function, click on it.

Some of these icons may be changed by the user, so your screen may not look exactly like this.

[About BirdData](#)

[Print a Registration Form on your printer](#)

[Table of Contents](#)

Table of Contents

[About BirdData](#)

[Acknowledgments](#)

[Adding Birds](#)

[Category Indexes](#)

[Changing Category Icons](#)

[Charting Weights](#)

[Daily Weighing](#)

[Help - How to access](#)

[Individual Bird Records](#)

[Moving, Copying, Exporting & Deleting Birds](#)

[Overview](#)

[Pair Data](#)

[Photo Scanning Service](#)

[Printer Setup](#)

[Printing Data](#)

[Print a Registration Form on your printer](#)

[Program File Information](#)

[Rebuilding Indexes](#)

[Resizing Columns in grids](#)

[Searching for Bird records](#)

[Selecting Chart Colors](#)

[Selecting Printer Fonts](#)

[Selecting Screen Fonts & Labels](#)

[Sorting Categories](#)

[Support for Registered Users](#)



Daily Weighing

The scales tool is used for daily weighing of birds. Clicking this tool causes BirdData to search all of the bird categories for any birds younger than a defined age. The initial search is for the system date. A spreadsheet will appear which allows you to enter the weights for each of the birds found as well as comments (116 characters). These will be added to each bird's record when you close the search form. The information will be sorted according to the selection made in the option box (by date, or by category).

To enter data for a different date, change the date and press ReStart. Likewise, to change the maximum age to search (in days), change that amount and press ReStart. In either case, before starting a new search the program will prompt you to save changes made (if any have been made). Enter the weight/comment data as before. You may continue to change the date and enter the new date's data without having to exit this function.

When the maximum age is changed, it becomes the default and will be used the next time this function is used. Likewise the sort order option becomes the default when changed.

If a date is entered and the search does not locate any birds younger than the age specified for the specified date, a message will appear saying "No birds found!" and the grid will be empty.



Search

The magnifying glass tool provides search functions for the bird categories. Enter a text string to search for and select appropriate search fields and categories. For example, to find the birds raised in 1989, or the birds from a particular breeder, use the appropriate search text and fields. Search strings are not case sensitive, so April will find both APRIL and april.

The spreadsheet of search results allows access to each record by Double-Clicking on the entry, just as you do in the category indices. If just the header row of the grid is showing it means that no birds were found matching the search criteria. The title (search caption) for the search grid may be changed in the search dialog. This is useful if you wish to print the data out with a specific heading, since the title will be printed. If a permanent change in the search caption is desired, use the **Caption Labels** item in the **Preferences** submenu of the **Tools** menu.



Print Button

The printer tool will print data from the currently selected record or chart. When the information is not available or is not printable, the smart caption for the printer icon will be greyed when the cursor is moved over the printer button - otherwise it will be the normal yellow. If you press the button when there is no available data a message box will pop up to tell you that nothing is available to print. Before you click the printer button, make sure that your default printer (see [Printer Setup](#) for information about the default printer) is on-line; you may want to select a [printer font](#). The recommended font size is 10 or less, although you may need to experiment to find a size that allows all of the data to show on your printed page. Long comments will be truncated at the right side of the page if the font size is not small enough.

Clicking the print tool while a graph is displayed, or while the index for a graph is displayed, will print a copy of that graph at full page size. Keep in mind that colored backgrounds will print as shades of grey; you should probably use the **Chart Colors** item in the **Preferences** submenu of the **Tools** menu to change the chart colors to black lines on a white background before printing. A second page containing the graph index will also print.

Printing out one of the pair records will print all of the journal and clutch information; printing a bird's record will include all weight and comment data for that bird.

Choosing **Print Data** from the **Tools** menu is the same as clicking the printer icon.

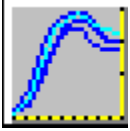
Selecting Printer Fonts

Printer fonts are selected via the **Fonts** item in the **Preferences** submenu of the **Tools** menu. A dialog box will allow you to select a font and size that is available for your default printer. If the font size selected is too large, some of the data lines will be truncated at the right of your pages. Generally, a font size of 10 should work fine.

This will only work on a previously selected default printer. If you are not sure that you have a default printer selected use the Printer Setup item first.

Printer Setup

BirdData will only print to the Windows default printer, which you select in the Windows Control Panel. Once you have a default selected, you may change printers (If you have more than one printer connected), using this menu item in the **Tools** menu without having to go to the Control Panel. An error is generated if there is no default printer installed when you invoke this tool. In that case go to the Control Panel and install a default printer. You should not have to do this more than once unless some other program removes the default printer. If you have more than one printer and use this tool, the printer you select will become the default for all of your Windows program until you reset it. After selecting a default printer, use the **Font** Preference item to select the Printer Font type and size.



Graph Weights

Use this feature to produce weight charts for a bird or group of birds. This is an important function of BirdData, since it allows you to compare a current bird with similar birds raised before. In the dialog box, you may choose to graph all of the birds in a category or categories, a single bird, or birds whose description matches a search template. Placing a qualifier in the description of your babies will make it easier to search for related babies. For example, if all of the African Grey babies simply had descriptions of African Grey, you would not be able to separate related birds. Using the initials of the parents at the beginning of the description will help. For example, I have African Grey pairs named Gandalf & Sterling and Casper & Wendy. Gandalf and Sterling's babies are GS African Greys, and Casper and Wendy's babies are CW African Greys. I can graph them by selecting CW as a search string along with the African Grey category.

When you select OK, there will be some period of waiting with an hourglass cursor while the program searches for all of the birds that meet your criteria, figures what the scale of the graph will need to be, and then graphs the birds.

Once the graph is displayed there will be a separate window containing an index of the graphed birds. If there is a single bird that you would like to see highlighted on the graph, click on that listing. The chosen bird will be highlighted against the field. You may choose to alter the highlight color or any of the colors used in the graph. See [Selecting Chart Colors](#).

When Individual Birds is selected as a criterion, the chart will be blank and all birds meeting the category criteria will be listed in the index. Clicking on them one-by-one will display them, with the most recent being displayed in the highlight color.

Whenever you click on an index entry, the focus will shift to the graph window.

The print tool will print the entire program screen as displayed when printing is selected, and will print the index as a second page.

Closing either an index or its associated graph will also close the corresponding window.



Sort Button

The button will be as shown when the active screen is an index to one of the bird categories. Pressing the button will pop up a menu that will allow you to sort the index by Description, Hatch Date, or Band Number. Sorting by Description has a secondary sort by Hatch Date, and a tertiary sort by Band Number. For each of the other two the secondary sort is Description, with the remaining parameter used for tertiary sort purposes.



New Bird

The "Chick in Shell" is the icon for the new bird tool. Use this tool to add a new bird to one of the bird categories. Clicking the tool will bring up a dialog so that you can select a category for the bird. Once you have selected a category, a blank record will be displayed. You may then fill in the information. Alternatively, after selecting a category you may select "Repeat last entry." The entry at the end of that category's list will be repeated, except that daily weights and comments will be deleted. This is helpful when entering all of the babies from a clutch.

When you want to make a new record that is substantially the same as an existing record which is not the last record, you may use the copy function. Open the record to be copied and choose **Copy Record** in the **Record** Menu. A record may be copied to the same category or a different one.



Bird Categories

The bottom icon bar below the menus provides access to individual categories. There may be any number of categories for bird records. They may be identified by bird icons representative of the category, or by a simple listing which is obtained by clicking the icon at the left of the bird icon bar (as shown above). In the distribution package, there are 11 pre-defined categories, which you may modify or delete as you wish:

African Greys, Amazons (represented by a Blue-Front), Cockatoos (represented by a Sulfur-Crested), Conures (represented by a Sun), Lories (represented by a Yellow-Backed Chattering), Macaws (represented by a Blue & Gold), Pionus (represented by a White-Cap), Poicephalus (represented by a Senegal Parrot), Ringnecks, Eclectus, Pets (represented by a bird-in-cage).

Each of these icons and category names may be changed by the user to suit your needs - see [Changing User Icons](#).

See also:

[Individual Records](#)



Pair Data

Pair records are accessed by clicking the interlocked sex-symbol button or by choosing the **Pair Index** item in the **Pair** menu. Double-click on an entry to show the data for that pair.

The header info contains primary information about the male and female. There is a **Pair ID** entry that may contain any sort of Alpha-Numeric entry that you may wish to use to identify your pairs; this information is displayed in the pair index along with the species, plus the female and male names. The pair ID is limited to 8 characters.

There are three separate sets of data associated with a pair. Each is accessed by clicking the index tab for that data set. The first set, which is visible when the record is first opened, contains a number of data items for the male and female. The second tab will open a **Journal**, while the third tab accesses **Clutch** and **Egg** info.

The **Journal** is a diary that may be used to keep any sort of information not explicitly provided in another field of the record. The first column may be used to date the information (a date is not required), and the comments themselves may be up to 244 characters in length. Add new comments and delete existing comments by using the row add & delete icons. Comments are added following whichever row is selected, so before using the add icon be sure to click on the row preceding the space where you want to add a comment. Likewise, be sure to select a comment to delete before using the delete icon. When the journal is first opened, the last line is selected, so additions will be at the end of the journal.

The Clutch and Egg info consists of two grids. The first grid is the **Clutch Index**. No direct data entry can be made in this grid. Only the first egg of a clutch is shown in the index. Clicking on a listing will open up the egg record for this clutch. Entries may be added, inserted, or deleted using the row add & delete icons. Before adding or deleting, be sure to select the appropriate clutch (additions will follow the currently selected clutch). When the record is first opened, the last clutch is selected, and its contents are in the egg grid below the index.

The second grid is the **Egg Listing**. The number of eggs per clutch is fixed at 10, which satisfies most parrot type birds. If your birds lay more than 10 eggs per clutch, congratulations, and please use two listings for one clutch (do let the author know).

You may enter the laying date and the hatch date, with a comment. As you enter the laying date, an expected hatch date will also appear, based on the entry in the **Avg Incubation** fields (see below). The record structure for BirdData allows a maximum comment length **per clutch** of 206 characters. This means that, if there were 100 characters in each of 10 comments, only the first two comments plus 6 characters of the third would show when the clutch was next accessed. Keep this limitation in mind when entering comments.

The **Avg Incubation** area, located between the clutch index and clutch grids, contains numbers which will be used to calculate the approximate hatch date after you have entered the laying date. There are two separate entries, one for first egg and the other for all other eggs. The author's experience has been that pairs typically do not incubate immediately upon the laying of the first egg, resulting in a longer incubation period. You may enter numbers into the two boxes directly, or you can press the recal button to have the program use actual hatch dates to figure the time interval. The recommendation is to enter "book" figures to begin with and then use the auto-calculation when there is actual data.



Help Menu and Icon

Help is available in BirdData through several mechanisms. Generally, context-sensitive help is available by pressing the F1 function key or clicking this icon at any time. The **Help** menu provides access to some specific help elements:

Overview

This menu item takes you to a screen representation of BirdData, where you may click on any of the elements for specific help. [Click here to see the Overview.](#)

Contents

This menu item jumps to the table of contents, and is equivalent to clicking the Contents button within help. Click the Contents button above to jump to this page.

Search for Help on...

Searches the keyword index for the helpfile. This is equivalent to clicking Search on the menu bar above.

Author Contact & Support

Takes you to the [How to contact the author](#) topic.

About BirdData

Version and copyright information about BirdData. A registration form may be printed from this window.

Individual Records

Category index:

Click on one of the bird category icons and the screen will display an index of the birds in that category. The index shows Num, Record, "Description," "Hatch Dt," "Band Num," and "Sold to." The first column provides sequential numbering so that a running count of birds in the category is available. The second column is the physical record number for the birds file. Record number 221 would be a file called BRD00221.REC in your BDATA3 directory. The last column is one the author uses to identify babies; it is one of 6 comment fields in the individual record screen. You can change the title of these fields as well as choosing which one to display in the index. See [Selecting Screen Fonts & Labels](#). When the index is the active window, the Sort button will be displayed. The width of the columns may be resized - see [Resizing Columns](#). When the index is first opened, the last record is selected.

Double-click on a listed bird. It does not matter what column you double-click on. The screen will display the complete record for the bird bird.

Bird Record:

Bird records consist of a header, six defined comments, and a diary/journal.

The header contains the same information shown in the index: Description, HatchDate, and Band Num, with the addition of the bird's current age (calculated to the current system date). The last item in the header is the category. The category may be changed by clicking the choose category... button and choosing a new category. This is the same as choosing **Move** in the **Record** menu.

The comments and journal are on separately tabbed dialogs. The left tab is the comments, which is displayed when the record is first opened. The six comment lines are free-form, 116 characters each. The labels at the beginning, which default to Parents, Breeder, Sold To and three Comments, are all user definable; see [Selecting Screen Fonts & Labels](#).

Each comment is free-form, and may be multiline. If a font size larger than 10 is used, there may only be one line showing; at 10 or less you should be able to see 2 lines. Scroll lines up or down by using the arrow keys on your keyboard.

The right tab is the diary/journal. There are four fields, Age, Date, Weight, and Comment. Age is shown in days, and is only available if there is a valid date in the Date field. It is possible to have a negative age, if there is a comment dated before the hatch date. No age will be shown if there is not a valid hatch date. Weight data is used in the graphing function, but only if there is also a valid date. Comments are 116 characters, and do not require either a date or a weight. The maximum number of comments is 2000 (a limitation of the grid control) or available disk space - each comment adds 128 bytes to the record. Add new lines and delete existing lines by using the [row add & delete icons](#). New lines are added after the selected line; when the record is opened the last line is selected.

The width of the columns may be resized - see [Resizing Columns](#).

Resizing Columns

The width of the columns used in grids may be resized. Depending on your date format, you may need to widen a column to show all of a date, and there may be other preferences in your display of data. To resize a grids columns, place the cursor between two columns in the header (top) row - the cursor will change to sizing arrows. Press the left mouse button down and drag the column to the desired width.

When that index or record is closed, the new column widths are stored and will apply to future indices or records of that type.

About BirdData



Don Bradner
Arcata Pet
600 F Street
Arcata, CA 95521-6301

BirdData copyright 1991-1995 by Don Bradner. BirdData is Shareware. [Click here to print a Registration Form](#) and send it with \$25.00 to the author at the above address. California residents please add \$1.81 for state sales tax, and Non-US users please add \$1.00 for Air Mail service. See [Author Support](#) for information on contacting the author.

As a registration bonus, you may have two photos or 35mm slides converted to high resolution computer graphics for free. See [Photo Scanning Service](#).

Compuserve members may register on-line for \$30.00 (higher price reflects costs imposed by CIS); includes any applicable tax or foreign shipping. To use this method, GO SWREG. The program registration number is 3986. Regardless of the method of registration, you will receive a copy of the most recent version of BirdData and a registration key that will eliminate the startup screen for this and all future versions of BirdData. An icon editor accessible from the **Tools** menu will also be included.

Commercial use: BirdData may be used commercially, as long as there is a registered copy for each computer/terminal that is using it. The author is willing to discuss customization of the program for commercial/large scale applications.

Program Files

The following information about BirdData files is provided for those who want to know what files are used by BirdData. The information may be useful if the program is uninstalled.

Files that make up BirdData.

The files are compressed on the disk. They are listed here with their compressed and uncompressed names. If you remove BirdData from your system, be careful about deleting any file with a .DLL or .VBX extension, since it might be used by another program (save a copy just in case). The setup program only copies a file to your disk if it does not find the file already or if this file is newer.

References to the BDATA3 directory mean the directory you chose during installation for the program files.

Compressed	File Name	Type and where installed
BDATA3.EX	BDATA3.EXE	Program, BDATA3 directory
BDATA3.HL_	BDATA3.HLP	This file, BDATA3 directory
BDATA3.IN_	BDATA3.INI	Data file, BDATA3 directory
	SETUP.EXE	Setup Program, not transferred
	SETUP.LST	Used by Setup
SETUPBDT.EX_	SETUPBDT.EXE	BirdData Setup, Windows directory
VBRUN300.DL_	VBRUN300.DLL1	Library File, Windows\System directory
VER.DL_	VER.DLL	Library File, Windows\System directory
SETUPKIT.DL_	SETUPKIT.DLL	Ditto
CMDIALOG.VB_	CMDIALOG.VBX	Ditto
GRID.VB_	GRID.VBX	Ditto
WWPLIBR.VB_	WWPLIBR.VBX	Ditto
BDATAREG.KEY	BDATAREG.KEY2	Registration key, BDATA3 directory
ICONWRKS.EX_	ICONWRKS.EXE3	Icon Editor, BDATA3 directory
ICONWRKS.HL_	ICONWRKS.HLP3	Help File, BDATA3 Directory
	README.TXT	Instruction file, BDATA3 Directory
	WHATSNEW.TXT	Program history file, BDATA3 Directory
	SCANNING.TXT	Info on photo scanning service
68 *.IC_ files	*.ICO4	Icon files, BDATA3\ICONS Subdirectory

1Note: VBRUN300.DLL may not be included if the program was obtained from an online source. It will have to be obtained to run the program and the setup program. From on-line sources, it is usually VBRUN300.ZIP or VBRUN3.ZIP. If the program was obtained on disk then the file should be included; if not, contact the source of the disk. If the file is obtained separately, it must be installed in your Windows\System directory BEFORE you run setup.

2Note: BDATAREG.KEY included only with registered versions.

3Note: ICONWORKS included only with registered versions.

4Note: There are a number of custom icons included with BirdData; they were drawn by the author or by Sally Blanchard. Sally's all have a file name beginning with 'SB'. You may use these as you wish, to replace the bird group icons in the program defaults. There is also a blank icon included to use as a template for creating your own icons. You will need an icon editor; there are many free and shareware editors available; IconWorks is included with registered copies from the author and is directly accessible from the Tools menu.

BirdData will make a one-line section addition to your WIN.INI file. This entry tells the program the directory path to the program files.

BirdData will create a number of .REC files and .NDX files in your BDATA3 directory for the storage of data. If you follow good backup procedures, these are the most important to backup, along with BDATA3.INI.

The Author

Selecting Screen Fonts & Labels

Monitor size and resolution will affect the way different fonts appear, and the fonts the author selected for BirdData may not look good on your computer. Selecting the **Screen Fonts** menu item in the **Preferences** item in the **Tools** menu will allow you to set the fonts for most of the elements of the program. Follow the on-screen directions and try various fonts until you like the look.

Another preference item is **Caption Labels**. Selecting this item allows a user to change the labels for the 6 comment lines in the bird records, and the ability to select which of these lines will show up as a title in the category index. Also in this dialog is the title used for the index of birds produced by the Search function.

Selecting Chart Colors

You may find that the author's choices of colors for the chart function do not look good on your monitor. Selecting this option from the **Preferences** item in the **Tools** menu will allow you to change the colors used. There are 4 elements that you can change: Background, Main Lines, Highlight, and Border. The Main Line Color refers to the color that is used to chart the full complement of birds selected, while the Highlighte refers to the color used for a single bird when it is displayed against the field. The Border is the area at the bottom and the right of the chart on which ages and weights respectively are listed.

If you choose the same color for two elements that should contrast, you will receive a warning message. If you choose black for the border color, you will receive a message that the text will not show. If you print copies of the charts, a white background with black lines will print best (unless you have a color printer!)

Photo Scanning Service

Arcata Pet now offers a photo scanning service. Turn your favorite bird pictures into computer graphics. We have the hardware and software to produce high resolution images from your prints or 35mm slides. As an incentive to try the service, and a bonus for registering BirdData, we will produce two scans for free, with no shipping charges.

There is an order form for scanning services in the file SCANNING.TXT which installed in your BDATA3 directory

To be fair for those who registered BirdData before this offer was available, or who decide to try it later, this offer is extended to include prior registrants. In that case, please include the shipping charges, and write "Already Registered" on the order form.

We will also include a shareware utility by the author of BirdData, called WWPlus. With this utility, you may display the images as your Windows Wallpaper, or use them as a screensaver, or both. The utility also allows resizing and cropping of the images, as well as reducing the color depth to 256 or 16 colors.

How to contact the author

The author is dedicated to making BirdData continuously better, and is interested in hearing what you think about the program whether you register or not. You may contact the author by mail at the following address:

Don Bradner
Arcata Pet
600 F Street
Arcata, CA 95521

E-Mail addresses:

Compuserve: 76130,1007
America OnLine: DBirdMan
Internet: dbirdman@redshift.com
Bird Info Net BBS, AKA Colorado Connection: Don Bradner

Messages may also be left in the FidoNet Parrots conference, and in the Compuserve PetsForum, Caged Bird section (5).

The latest version of BirdData can normally be found in the following places:

Internet FTP: <ftp.cica.indiana.edu/pub/pc/win3/pim>

Compuserve Pets Forum, Software Library (GO PETSFORUM)

America OnLine: Pet Care Club (keyword PET) in the Bird Library.

Bird Info Network in Arvada, Colorado. The number for BIN is (303) 423-9775. Although only paid users of BIN may normally download files, the sysop, Terry Rune, has graciously allowed BirdData to be in a free download area.

Exec-PC BBS (Milwaukee) (414) 789-4210

Registration of \$25 will include a copy of the latest version on disk. Registered users who do not have online access may obtain new disk copies for \$5 (\$7 outside the US) to cover the cost of the disk, mailer, and postage.

[Click here to Print Registration Form.](#)

**BirdData Version 3.05
Registration Form**

Thank you for registering

There are several registration methods available:

With a credit card you may order by Phone: (707) 822-6350

or FAX: (707) 822-6570

By mail, with check, credit card, or money order in US Dollars to: Don Bradner

Arcata Pet
600 F Street

Arcata, CA 95521-6301

Compuserve members may register on-line: GO SWREG, program registration number is 3986.
Note that this costs US\$30.00 (includes any sales tax or Air Mail costs). This is a slightly higher price than by other methods, due to the added costs imposed by Compuserve.

Registration price is US\$25.00, including postage within the US.

Number of registrations desired _____ x 25.00 = \$ _____
California residents add \$1.81 per reg. for sales tax _____
Non-US add \$1.00/registration for air mail _____
Total _____

Software will be sent on 1.44 meg 3-1/2 inch disk. Send disk to:

Name: _____

Mailing Address: _____

City/State/Zip/Country: _____

Phone number (_____) _____

If paying with a credit card: Card type VISA MasterCard AMEX Discover

Card Number: _____ Expiration Date: _____

Signature to authorize charge: _____

Where did you get BirdData?

BBS or other on-line service. Which one? _____

Software/Shareware Service. Which one? _____

Shareware CD-ROM. Which one? _____

Friend

Other _____

(optional) What do you like about BirdData:

(optional) What would you like added or changed in BirdData:

Acknowledgments

The author has been helped by many birdkeepers and programmers with this project. Special thanks to the BirdData users who volunteered for Beta testing, to the late Stephen Ceideburg, former co-moderator of the Fidonet Parrots Conference for the scan of the author's baby Eleonora Cockatoo that is used in the program's logo and icon, and to Sally Blanchard for all of the fine icons she drew for the program.

Category Menu

The **Category** menu contains the following items:

Select Category

This menu item is the same as clicking the leftmost icon on the category button bar. A submenu showing the available categories will be displayed for your selection. If there are 20 or more categories, the 20th item in the submenu will be **List all...**; choosing this selection will bring up a dialog box that allows you to scroll through all categories.

New Category

This menu item adds a category and brings up the [Changing User Icons](#) dialog to allow selection of a title and icons. By default, the title is New Category. Also by default the icon is not displayed. Choose to display the icons by checking the box. If the box is checked but no icons are selected, a default BirdData icon will be used.

Delete Category

You may use this item to delete an empty category. To preserve data integrity the program will not allow you to delete a category that contains any birds. You must first delete any birds in the category or move them to another category.

Edit Category Name & Icon

Use this option to change the title of a category or its displayed icon. For more information, see [Changing User Icons](#).

Rebuild Category Indices

This option will build a new set of bird category indices. Under normal circumstances, the indices should not require rebuilding. Since it is always possible for a glitch to occur, such as a power failure during a write of category information, this option is provided. If you suspect that an index is corrupted, select this option. It will not hurt to run the rebuild even if nothing is wrong.

Changing User Icons

As distributed, BirdData has categories set up which represent the author's use of the program. Since it is unlikely that other breeders raise the same mix of birds, you will likely want to change the icons and titles to reflect the types of birds that you raise. The **Edit Category Name & Icon** item in the **Category** menu allows you to do this.

First you will be prompted to choose a category, showing the existing names. When you have selected a category you will find a dialog from which you may change the category's title, icons, and whether or not the icon is displayed.

Note that there are two separate icons, one for the button in the up position and one for the down position. You may load the same icon in both selections, but the button will not appear to "depress" when you click it. This does not affect the program operation, but it will affect the "feel" of the program.

There are a number of icons provided with BirdData, in both up and down button formats. Those icons beginning with the letters SB are original creations of Sally Blanchard and the rest were the author's creations. There are a number of shareware and public domain icon drawing programs available that will allow you to draw your own. One such program is included with the registered version of BirdData, and is directly accessible from the **Tools** menu.

Clicking the load buttons will invoke a file dialog to set a new icon. You may use any valid Windows icon with an .ico file extension. All icons used by the program must be in a single directory, which by default is the "\ICONS" subdirectory of your BirdData directory. If you wish to keep the icons somewhere else, move them all. The next time that you run the program, it will look for the icons in the old location and, when it doesn't find them, will prompt you to provide the path to the new location.

Showing the icon allows one-button access to the category. When the number of categories is so large that not all icons can be displayed across the screen, uncheck the **show icon** checkbox on the least used categories. All categories are still available from a list, either by using the **Select Category** item in the **Category** menu, or by clicking the leftmost icon in the second row.

Record Menu

Moving, Copying, Exporting, Importing & Deleting Birds, and Saving Data Changes.

For all of the following operations, except adding and importing, you must first display the birds record by opening its current category index and double-clicking on the particular entry.

Adding

This menu item is the same as clicking the Chick-in-Shell icon to add a New Bird Record.

Moving

Bird records may be moved between categories. To change categories, either double-click on the category listing within the record, or choose the **Move Record** item in the **Records** menu. You will be prompted to select a new category, which must be different than the current one, after which the move will occur. If the index for the new category is visible, the bird listing will automatically appear at the end of the index listings. You may want to sort that category if the bird is out of order.

Copying

You may copy a record to the same or a different category. Copying to the same category is an easy way to make a new record where most of the data will be the same as an existing record. To perform a copy operation, select the **Copy Record** item in the **Records** menu. After the record has been copied, the new record will be displayed. Edit it as you wish and then save the changes, either by closing the record and responding to the prompt, or by choosing the **Save Data Changes** item in the **Records** menu (shortcut is CTRL-S).

Exporting

The purpose of exporting a record is to allow the exchange of data between two users of BirdData. The exporting of bird records is accomplished by selecting **Export Record** item in the **Records** menu. You will be prompted to provide a destination directory and file name, which can be any valid DOS filename and extension.

Importing

When you have been provided with a record exported by another user of BirdData, you will want to import it. The importing of bird records is accomplished by selecting **Import Record** item in the **Records** menu. You will be prompted to provide a source directory and the file name; after you have selected the file you will be prompted to choose a category to import the file into.

Deleting

Deleting bird records is accomplished by selecting **Delete Record** item in the **Records** menu. A confirming prompt will appear, giving you a chance to abort the deletion. This is a permanent action, with no recovery of the deleted data possible.

Saving Data Changes

When you have changed any of the data in a record and then close that record, you will be prompted to save the changes. There may be times when you wish to save the data in an open record, so that changes will be reflected in searches, weight charts, etc. In that case, use the **Save Data Changes** item in the **Records** menu. You may also do this by the keyboard CTL-S shortcut (hold down the Control key and press S).

Pairs Menu

The **Pairs** menu contains the following items:

Pair Index

This item is the same as clicking the Pair Data Icon, which displays the pair index.

Add a Pair

Adding pair records is accomplished by selecting the **Add a Pair** item in the **Pairs** menu. A new blank row will be added to the pair index, which will be shown if it was not already loaded. Double-Click the new entry to open it for data entry.

Delete a Pair

Deleting pair records is accomplished by selecting the **Delete a Pair** item in the **Pairs** menu. A list of pairs will be shown for your selection. After selecting a pair a confirming prompt will appear, giving you a chance to abort the deletion. This is a permanent action, with no recovery of the deleted data possible.

Export a Pair

The purpose of exporting a pair record is to allow the exchange of data between two users of BirdData. The exporting of pair records is accomplished by selecting **Export a Pair** item in the **Pairs** menu. You will be prompted to provide a destination directory and file name, which can be any valid DOS filename and extension.

Import a Pair

When you have been provided with a pair record exported by another user of BirdData, you will want to import it. The importing of bird records is accomplished by selecting **Import a Pair** in the **Pairs** menu. You will be prompted to provide a source directory and the file name.

Save Data Changes

When you have changed any of the data in a pair record and then close that record, you will be prompted to save the changes. There may be times when you wish to save the data in an open record. In that case, use the **Save Data Changes** item in the **Pairs** menu. You may also do this by the keyboard CTL-D shortcut (hold down the Control key and press D).

Windows Menu

The **Windows** menu provides standard methods for arranging open windows within the Multiple Document Interface. BirdData remembers your settings and uses them in future sessions. The chosen tiling method (or cascade) will be checked in the menu. Default is cascade.

Tile Vertical

When this option is checked, open child windows will be displayed side-by-side.

Tile Horizontal

Horizontal tiling means that open child windows are displayed one above another.

Cascade

When the child windows are cascaded, they are displayed like a deck of cards, with just the title bars of lower windows showing.

Arrange Icons

This menu item is used to line minimized child windows in a row across the bottom of the BirdData main window.

Smart Captions

BirdData employs Smart Captions - small labels which provide a text description of an icons function. Place the mouse cursor over an icon and leave it for a half-second and a label will pop up. the label has a yellow background if the function is available, and a grey background if the function is disabled at that moment. These labels can also be helpful if you have two identical bird icons and want to tell them apart - the caption for a bird category is the category title.

Smart Captions may be disabled via the **Preferences** item in the **Tools** menu. They are enabled by default.

Multiple Document Interface Window

BirdData employs a **Multiple Document Interface (MDI)**. You may open more than one record at the same time, with each being displayed in what is called a child window. This window may not be moved outside of the main BirdData window (the parent). Within the parent, windows may be minimized, maximized, tiled, or cascaded. See the [Windows Menu](#) for details on these options.

When a child window is maximized, its control box and restore buttons will appear on the menu bar above the icons, and the parent window caption will change from BirdData to BirdData - [Title of child window].

Tools Menu

The **Tools** menu has a number of configuration items, as well as items that don't easily fit in the other menus. Help for specific menu items may be seen by clicking the items below:

[Daily Weighing](#)
[Search for Record](#)
[Print Data](#)
[Printer Setup](#)
[Chart Weights](#)
[Icon Editor](#)
[Preferences](#)

Preferences SubMenu

The **Preferences** submenu of the **Tools** menu contains user configuration items. Help for a specific item may be seen by clicking the item below:

[Smart Captions](#)

[Caption Labels](#)

[Fonts](#)

[Chart Colors](#)



Row Addition and Deletion

The Row Addition and Deletion icons are used to add new rows, or delete existing ones, to/from a number of the data grids used in BirdData. These include the weight and comment grid in an individual bird record, and the comment and clutch records in a pair record. The icons are **not** used to add birds or pairs to the indexes.

Before using either of these icons, be sure that you have selected the row to be deleted or the insertion point for a row addition. Do this by clicking on the row to be deleted, or on the row that is above the desired insertion. In most cases, if no selection has been made, the program will assume that the first row is selected.

Icon Editor

Copies of BirdData obtained from the author, either by registering or ordering an upgrade, will include an icon editor that may be reached from the **Icon Editor** item in the **Tools** menu. This editor is a modified version of **Icon Works**, which is provided by Microsoft in their Visual Basic programming package, and contains its own help file.

